

Annual provisional suicide statistics for deaths reported to the Coroner between 1 July 2007 and 30 June 2020

Table 1: Provisional suicide deaths and rates per 100,000 population between July 2007 and June 2020

Financial year	2007/2008	2008/2009	2009/2010	2010/2011	2011/2012	2012/2013	2013/2014	2014/2015	2015/2016	2016/2017	2017/2018	2018/2019	2019/2020	Total
Total	540	531	541	558	547	541	529	564	579	606	668	685	654	7543
Per 100,000	12.20	12.04	12.26	12.65	12.34	12.10	11.73	12.27	12.33	12.64	13.67	13.93	13.01	-

Notes:

1. The per 100,000 population rates shown have been calculated using Stats NZ's national population estimates as published at the end of each financial year.
2. Information about the estimated population of New Zealand can be found at <https://www.stats.govt.nz/indicators/population-of-nz>

Table 2: Provisional suicide deaths by gender and rate per 100,000 population between July 2007 and June 2020

Financial year	Male (M)		Female (F)		Gender ratio (M:F)
	Number	Rate	Number	Rate	Ratio
2007/2008	405	19.35	135	6.20	3.00:1
2008/2009	394	18.61	137	6.23	2.87:1
2009/2010	401	18.70	140	6.29	2.85:1
2010/2011	419	19.36	139	6.20	3.01:1
2011/2012	405	18.58	142	6.30	2.85:1
2012/2013	388	17.63	153	6.76	2.54:1
2013/2014	385	17.50	144	6.26	2.67:1
2014/2015	428	18.96	136	5.81	3.14:1
2015/2016	409	17.71	170	7.13	2:41:1
2016/2017	457	19.36	149	6.12	3.06:1
2017/2018	475	19.72	193	7.79	2.46:1
2018/2019	498	20.58	187	7.49	2.66:1
2019/2020	471	19.03	183	7.18	2.57:1

Notes:

1. Male and female populations come from Stats NZ's national population estimates as published at the end of each financial year.
2. The per 100,000 population rates for the male and female groups have been calculated using the male and female populations respectively.
3. Information about the estimated population of New Zealand can be found at <https://www.stats.govt.nz/indicators/population-of-nz>

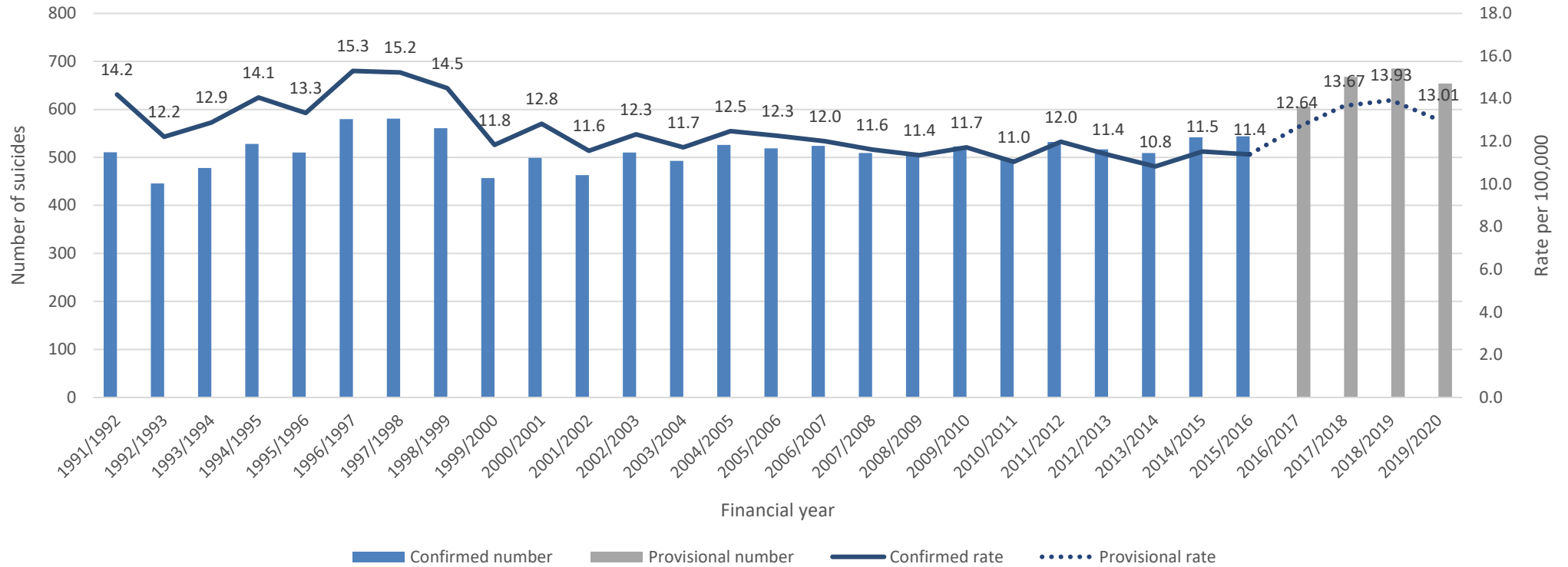
Table 3: Provisional suicide deaths by age group and gender, and rates per 100,000 population, between July 2019 and June 2020

Age group (years)	Male		Female		Total	
	Number	Rate	Number	Rate	Number	Rate
10-14	2	1.16	4	2.46	6	1.86
15-19	36	22.35	23	14.97	59	18.69
20-24	40	22.61	20	12.23	60	17.77
25-29	63	33.91	17	9.33	80	22.21
30-34	57	32.88	12	6.57	69	20.46
35-39	40	25.32	11	6.62	51	16.36
40-44	36	24.64	8	5.17	44	14.90
45-49	42	26.90	15	8.89	57	17.50
50-54	33	21.56	15	9.08	48	15.32
55-59	41	26.66	14	8.45	55	17.39
60-64	26	18.68	13	8.69	39	13.97
65-69	15	12.51	9	7.03	24	9.96
70-74	15	14.44	7	6.31	22	10.78
75-79	7	9.98	4	5.10	11	7.69
80-84	11	24.87	7	12.93	18	19.48
85-89	5	20.89	3	9.11	8	14.25
90+	2	16.72	1	4.61	3	9.31
Total	471	19.03	183	7.18	654	13.01

Notes:

1. Male and female populations come from Stats NZ's national population estimates as published at the end of 2019/2020.
2. The per 100,000 population rates for the male and female groups have been calculated using the male and female populations respectively.
3. Information about the estimated population of New Zealand can be found at <https://www.stats.govt.nz/indicators/population-of-nz>

Figure 1: Confirmed and provisional suicide deaths and rates per 100,000 population between July 1991 and June 2020



Notes:

1. Confirmed numbers are from the Ministry of Health's official suicide data, extracted on 12 August 2020. Rates per 100,000 are standardised to WHO world standard population.
2. Provisional numbers and rates are from the Chief Coroner's annual provisional suicide statistics, as at the end of each financial year.

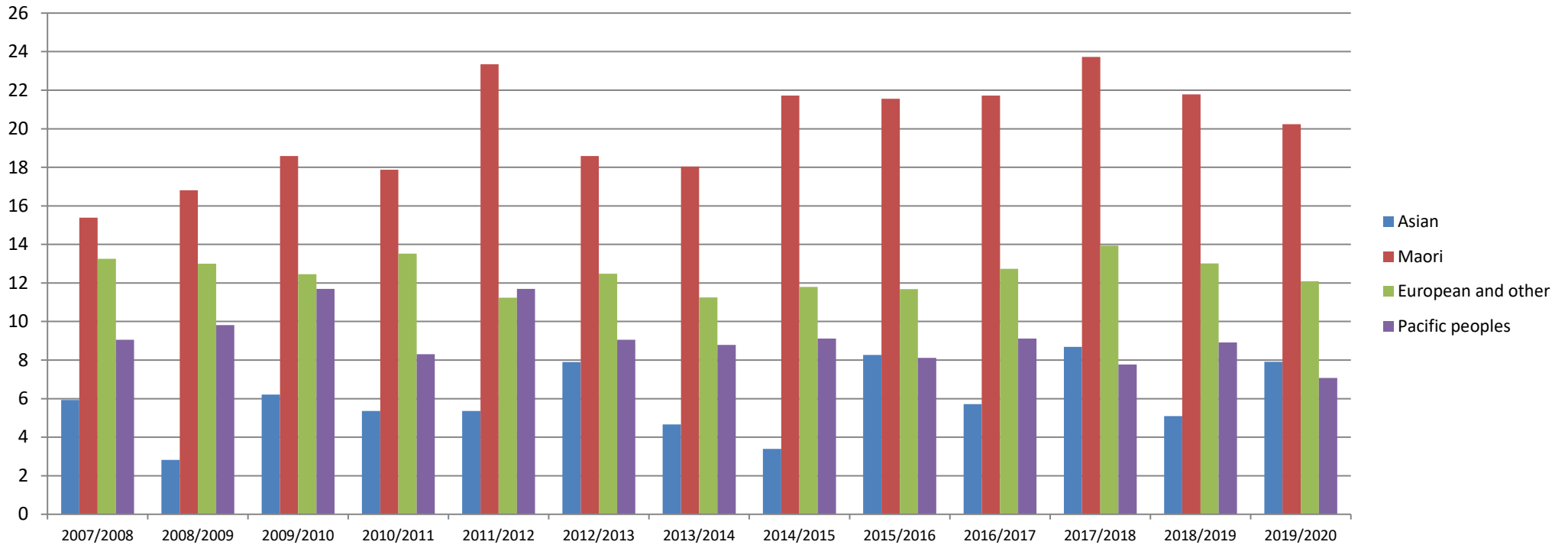
Table 4: Provisional suicide deaths by ethnicity between July 2007 and June 2020

Financial year	Asian		Māori		Pacific peoples		European and other	
	Number	Rate	Number	Rate	Number	Rate	Number	Rate
2007/2008	21	5.93	87	15.39	24	9.05	408	13.26
2008/2009	10	2.82	95	16.81	26	9.81	400	13.00
2009/2010	22	6.21	105	18.58	31	11.69	383	12.45
2010/2011	19	5.36	101	17.87	22	8.30	416	13.52
2011/2012	19	5.36	132	23.34	31	11.69	365	11.24
2012/2013	28	7.90	105	18.58	24	9.05	384	12.48
2013/2014	22	4.66	108	18.04	26	8.79	373	11.25
2014/2015	16	3.39	130	21.72	27	9.12	391	11.80
2015/2016	39	8.27	129	21.55	24	8.12	387	11.68
2016/2017	27	5.72	130	21.72	27	9.12	422	12.73
2017/2018	41	8.69	142	23.72	23	7.77	462	13.94
2018/2019	36	5.09	169	21.78	34	8.91	446	13.02
2019/2020	56	7.91	157	20.24	27	7.07	414	12.08

Notes:

1. Ethnicity count is based on information reported to the Coroner and may differ from that held by other agencies, such as the Ministry of Health.
2. The 2018/2019 rates differ from those previously published as they have been updated to reflect 2018 census data, which was not available when the 2018/2019 rates were first published.
3. The per 100,000 population rates have been calculated using Stats NZ's population information as published in the 2006, 2013 and 2018 censuses. 2006, 2013 and 2018 census information is available at <http://archive.stats.govt.nz/Census.aspx>
4. The per 100,000 population rates have been calculated using each ethnic group's population respectively.
5. 'European and other' includes, but is not limited to: New Zealand European, European, Middle Eastern, Latin American, African and 'not elsewhere defined'.
6. The small numbers for Asian and Pacific peoples mean data may be more susceptible to fluctuation.

Figure 2: Provisional suicide rates by ethnicity per 100,000 population between July 2007 and June 2020



Notes:

1. Ethnicity count is based on information reported to the Coroner and may differ from that held by other agencies, such as the Ministry of Health.
2. The 2018/2019 rates differ from those previously published as they have been updated to reflect 2018 census data, which was not available when the 2018/2019 rates were first published.
3. The per 100,000 population rates have been calculated using Stats NZ's population information as published in the 2006, 2013 and 2018 censuses. 2006, 2013 and 2018 census information is available at <http://archive.stats.govt.nz/Census.aspx>
4. The per 100,000 population rates have been calculated using each ethnic group's population respectively.
5. 'European and other' includes, but is not limited to: New Zealand European, European, Middle Eastern, Latin American, African and 'not elsewhere defined'.
6. The small numbers for Asian and Pacific peoples mean data may be more susceptible to fluctuation.

Table 5: Provisional suicide deaths of Māori ethnicity by age group and gender between July 2007 and June 2020

Age group (years)	2007/2008		2008/2009		2009/2010		2010/2011		2011/2012		2012/2013		2013/2014		2014/2015		2015/2016		2016/2017		2017/2018		2018/2019		2019/2020		Total
	M	F	M	F	M	F	M	F	M	F	M	F	M	F	M	F	M	F	M	F	M	F	M	F	M	F	
10-14	2	2	4	3	1	1	3	4	5	4	1	1	1	2	3	3	1	1	1	7	3	3	3	4	0	3	66
15-19	12	4	10	14	10	8	21	7	25	12	16	8	7	11	13	10	13	11	11	4	15	9	16	12	10	10	299
20-24	11	2	10	4	11	5	12	5	13	6	15	13	22	5	13	6	14	8	15	9	19	7	27	11	15	9	287
25-29	9	2	4	4	13	2	11	2	15	3	10	3	12	5	18	5	16	5	13	8	15	6	17	6	19	3	226
30-34	10	3	10	1	8	1	6	3	7	6	9	4	8	6	13	3	12	6	10	5	11	4	14	6	25	5	196
35-39	4	7	6	0	11	2	3	2	5	2	6	1	7	2	10	4	7	5	13	3	11	4	6	2	11	3	137
40-44	5	3	6	2	10	2	7	1	10	2	7	0	5	2	13	4	3	3	7	1	11	1	5	8	10	3	131
45-49	2	1	2	1	7	0	5	2	5	1	2	0	5	2	4	0	4	3	6	5	7	3	5	3	8	3	86
50-54	4	0	3	1	2	1	5	1	3	2	3	2	1	3	3	2	4	1	4	0	2	3	6	4	7	4	71
55-59	3	0	3	1	3	3	0	0	4	0	3	1	0	0	1	0	3	2	3	1	1	2	4	3	6	1	48
60-64	1	0	3	0	2	1	1	0	1	0	0	0	1	0	2	0	3	1	1	0	0	1	2	2	1	1	24
65-69	0	0	1	0	0	0	0	0	0	0	0	0	0	0	0	0	0	0	1	1	0	1	1	0	0	0	5
70-74	0	0	2	0	1	0	0	0	1	0	0	0	0	0	0	0	1	0	0	0	0	0	2	0	0	0	7
75-79	0	0	0	0	0	0	0	0	0	0	0	0	1	0	0	0	2	0	0	0	0	1	0	0	0	0	4
80-84	0	0	0	0	0	0	0	0	0	0	0	0	0	0	0	0	0	0	0	0	1	0	0	0	0	0	1
85-89	0	0	0	0	0	0	0	0	0	0	0	0	0	0	0	0	0	0	1	0	0	0	0	0	0	0	1
90+	0	0	0	0	0	0	0	0	0	0	0	0	0	0	0	0	0	0	0	0	1	0	0	0	0	0	1
Total	63	24	64	31	79	26	74	27	94	38	72	33	70	38	93	37	83	46	86	44	97	45	108	61	112	45	1590

Notes:

1. M = Male and F = Female.
2. Ethnicity count is based on information reported to the Coroner and may differ from that held by other agencies, such as the Ministry of Health.

Figure 3: Provisional suicide deaths by month and national trendline between July 2007 and June 2020

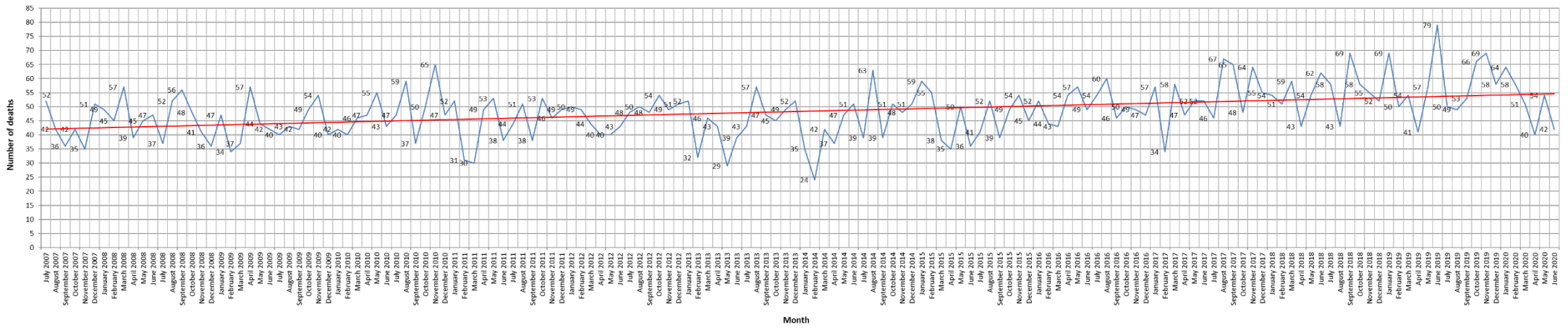


Table 6: Provisional suicide deaths by employment status between July 2007 and June 2020

Employment status	2007/ 2008	2008/ 2009	2009/ 2010	2010/ 2011	2011/ 2012	2012/ 2013	2013/ 2014	2014/ 2015	2015/ 2016	2016/ 2017	2017/ 2018	2018/ 2019	2019/ 2020	Total
Child not at school	0	0	1	0	0	0	1	1	0	0	1	1	0	5
Employed	232	207	208	200	195	211	222	246	252	262	308	307	282	3132
Home duties	9	13	13	7	7	2	13	6	11	9	6	10	5	111
Other	29	17	11	21	8	4	10	4	10	33	33	25	51	256
Prisoner	4	3	5	9	2	4	3	6	11	1	7	1	6	62
Retired/ Pensioner	56	56	54	53	53	49	67	70	70	64	78	69	84	823
Still enquiring	0	1	6	13	24	10	7	7	13	8	4	9	10	112
Student	37	51	42	50	53	54	48	47	55	54	63	71	53	678
Unavailable	2	6	4	4	2	0	0	0	2	3	2	2	1	28
Unemployed	140	138	163	157	155	156	147	169	146	167	161	185	158	2042
Unlikely to be known	31	39	34	44	48	51	11	8	9	5	5	5	3	293
Total	540	531	541	558	547	541	529	564	579	606	668	685	654	7543

Table 7: Provisional suicide deaths by District Health Board (DHB) region between July 2007 and June 2020

DHB region	2007/ 2008	2008/ 2009	2009/ 2010	2010/ 2011	2011/ 2012	2012/ 2013	2013/ 2014	2014/ 2015	2015/ 2016	2016/ 2017	2017/ 2018	2018/ 2019	2019/ 2020	Total
Auckland	53	53	39	51	42	46	41	48	50	43	73	54	58	651
Bay of Plenty	20	41	21	36	31	31	27	32	35	41	30	36	36	417
Canterbury	61	61	74	63	73	60	68	61	78	79	87	74	90	929
Capital & Coast	32	24	26	25	28	34	30	30	36	30	40	41	41	417
Counties Manukau	59	38	52	46	55	50	48	47	48	44	56	49	54	646
Hawke's Bay	16	23	23	25	27	18	28	29	26	27	29	38	46	355
Hutt	25	9	20	22	12	14	25	16	17	19	13	12	10	214
Lakes	12	20	21	23	18	15	15	10	21	17	9	23	14	218
MidCentral	27	25	22	24	32	18	41	27	22	35	32	37	27	369
Nelson Marlborough	16	17	13	12	24	17	13	18	24	17	12	20	24	227
Northland	19	15	16	20	24	29	21	28	21	36	41	33	39	342
South Canterbury	10	4	7	8	17	8	2	8	5	7	5	9	5	95
Southern	37	49	60	45	42	47	31	42	43	52	65	57	54	624
Tairāwhiti	14	8	6	8	3	5	2	13	8	6	14	10	8	105
Taranaki	17	17	18	20	12	17	14	19	11	16	11	14	12	198
Waikato	38	47	47	51	33	45	44	49	55	50	59	63	64	645
Wairarapa	6	5	11	5	7	10	8	9	6	12	8	8	5	100
Waitematā	62	56	51	55	50	62	52	63	49	52	64	87	54	757
West Coast	7	6	3	5	4	6	8	7	10	10	8	2	3	79
Whanganui	8	12	10	12	12	7	11	8	13	12	12	16	10	143
Off shore	1	1	1	2	1	2	0	0	1	1	0	2	0	12
Total	540	531	541	558	547	541	529	564	579	606	668	685	654	7543

Note: DHBs have varying population sizes. Each DHB's numbers should be read in the context of its population size.